

Notice of work:

Metro Sports Facility Christchurch Central

What	Ground improvement by vibro stone column installation
Where	Antigua Street, between Moorhouse Avenue and St Asaph Street
When	August 2018 to April 2019
Why	To improve the ground beneath the foundations of the new Metro Sports Facility

The Metro Sports Facility will be Christchurch's premier community sport and recreation facility, catering for people of all ages and abilities including high performance athletes. Providing aquatic and indoor sport facilities, it will cater for the day-to-day recreation and leisure needs of the community as well as local, national and international events.

WHAT ARE WE DOING

The March Menard Joint Venture (MMJV) are designing and delivering the ground improvement works. Approximately 8000 vibro stone columns will be installed to depths between 7 and 15m below ground level, to provide improved ground bearing and liquefaction resistance beneath the foundations of the new MSF structure.

WHERE ARE WE WORKING



HOW THIS MAY IMPACT YOU

Noise and Vibration

Increased noise levels will be experienced during a normal working day. We will have 4 large cranes and ancillary plant operating on the site for the duration of the works.

The ground improvement methodology involves compacting gravel into the existing soil by vibration. Some vibration may be experienced beyond the site perimeter. We will undertake vibration monitoring to ensure allowable limits are not exceeded.

Services

The ground improvement works are not expected to impact the water, waste water or electrical services for the area.

Working Hours

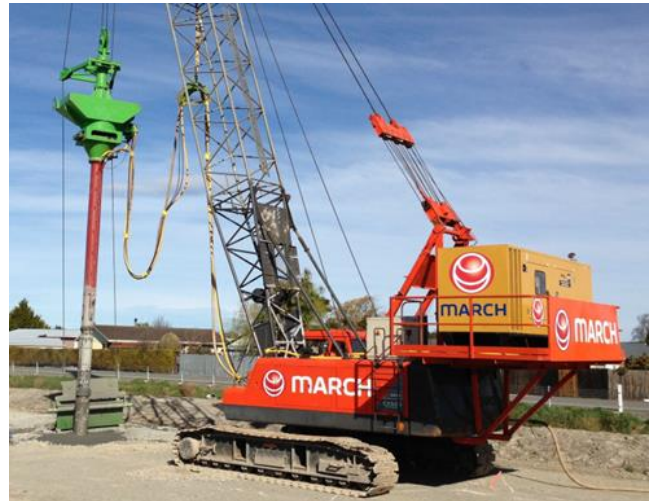
The site will be operational from 0730 to 1800hrs, Monday to Saturday. Deliveries will be continuous throughout these working hours.

TRAFFIC IMPACTS

Two-way traffic will be maintained on Antigua St, Moorhouse Ave and St Asaph St.

Additional truck traffic can be expected on Antigua St, as the works will require some 30-40 truck movements throughout the 10 hour day.

MMJV recognise Antigua St as a popular access route to and from the CBD, for cycle and foot traffic. All care shall be taken when trucks are required to enter or leave the site.



Vibro stone column installation by MMJV partner March Construction



The vibro-flot penetrates the ground, and crushed local stone is fed in to the void, forming a dense column of compacted gravel.

Need more information?

Contact (MMJV): Doug Close

Phone: 029 775 0060

Email: dclose@marchcon.co.nz

otakarold.co.nz

GENERAL INFORMATION



WEATHER

All works are subject to favourable weather and on-site construction conditions.



HOURS

Our Standard work hours are Monday to Saturday between the hours of 7:30am and 6pm.



NOISE

There will be increased noise, dust and vibration levels associated with this work. We will do our best to minimise this.



SAFETY

Safety is our number one priority. Safety is your responsibility too. Stay clear and keep alert – keep children and pets at a safe distance from the work site.