

---

# Notice of work:

## Central City Transport Projects – End of year status – Hospital Corner



---

Downer is closing multiple work sites temporarily for a short seasonal break.

**What** Fencing will be removed or reduced as much as possible, and all work sites will be tidied up and made safe.

---

**Where** St Asaph Street, Antigua Street, Tuam Street, Montreal Street and Oxford Terrace.

---

**When** From Friday 22 December 2017 until 8 January 2018.

---

We are closing our work sites for the summer break.

The current one-way systems will remain in place, and all work sites will be tidied up, made safe and fencing reduced or removed as much as possible.

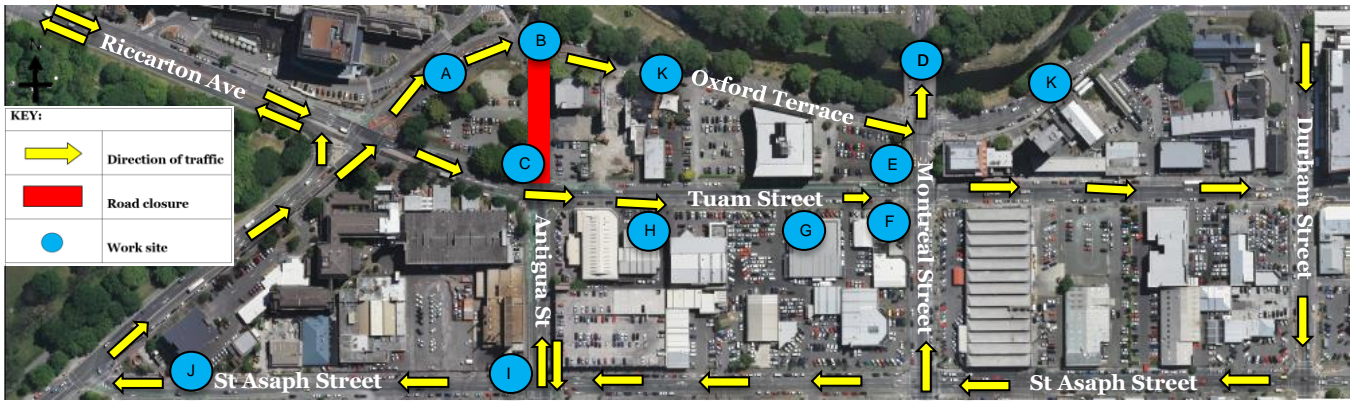
**From February 2018 intersections will be closed** (one at a time) to complete final sealing work. Closures will take place over weekends, from Friday nights to Monday mornings and will run around the clock.

More information will be provided when details are confirmed.



Downer is taking a short break over the holiday period.  
Our worksites close on **22 December** and re-open on **8 January 2018**.  
We send you warm wishes for a joyful holiday this summer.





**BRIEF DESCRIPTION OF UPCOMING WORK (POST-HOLIDAY)**

*Hospital Corner – work areas.*

- A – Exploratory potholing for service identification.
- B – Potholing and preparatory work for the new road and roundabout layout.
- C – Installing new storm water drainage lines, kerb and channel and carriageway.
- D – Installing new drainage, kerb and channel.
- E – Building new rain gardens and tree pits.
- F – Widening and resurfacing the footpath.
- G-H Resurfacing the existing footpath.
- I – New kerb and channel, garden beds and tree pits.
- J – New carriageway, garden beds and kerb and channel.
- K – Completion of the new City Promenade.

There will be limited on-street parking on Oxford Terrace during work to ensure safe and clear access for hospital and emergency vehicles. Access to existing off-street car parks for all businesses and residences will be maintained.

**If you have any work site related issues over the holiday period please call Christchurch City Council on 03-941 8999.**

*Need more information?*

**Contact: Peter Loakman**  
**Communication Coordinator Downer**  
**Phone: 027 2040 424**  
**Email: peter.loakman@downer.co.nz**